

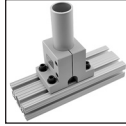
## Section #10 Pictorial Table Of Contents

How to  
Order



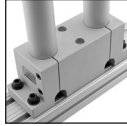
Page 534

Single Shaft  
Bases



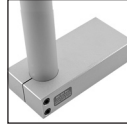
Page 535

Double Shaft  
Bases



Page 536

Single Shaft  
Blank Plates



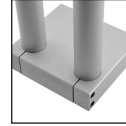
Page 537

Single Shaft  
Pre-Drilled Plates



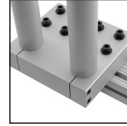
Page 538

Double Shaft  
Blank Plates



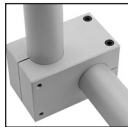
Page 539

Double Shaft  
Pre-Drilled Plates



Page 540

Stanchion  
Cross Clamp



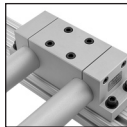
Page 541

Single Shaft  
Mounting Block



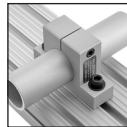
Page 542

Double Shaft  
Mounting Block



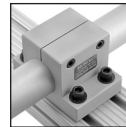
Page 543

Single  
Horizontal Base



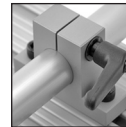
Page 544

Double  
Horizontal Base



Page 545

Horizontal  
Quick Clamp



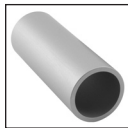
Page 546

Quick  
Cross Clamp



Page 547

Round  
Stock



Page 548

### Legend for Icons



This part is  
10 Series compatible



Design files for this part can  
be found on the 80/20® DVD  
(Design Software)

## Introduction to 80/20® Stanchions

Stanchions offer the capability of adding a fourth and fifth axis to your application. 80/20 stocks multiple types of stanchions to allow versatility when designing your project and modularity when utilizing your project. Choose from single or double shaft bases, blank or pre-drilled mounting plates, and single or double mounting blocks.

Now, take it a step further with 80/20's "Horizontal Quick Clamp" stanchion, which allows you to retain the modularity you get with T-slotted profiles. Utilize our tubes and solid rounds with our stanchions to create precise positioning.

## 80/20® Stanchions Advantages

- Adjustable in X, Y, and Z axis when used with T-slots
- Bolts directly to T-slotted profiles
- "Horizontal Quick Clamp" stanchion - check it out!
- Choose from aluminum or steel tubes for stanchion posts

**How to Order 80/20® Stanchions**

When ordering stanchions we recommend you follow these steps. First, select your tube size to ensure the correct strength needed. Then, select your base and/or plate. If your application requires an additional axis, select a cross clamp. Finally, determine tube length. The tube length will vary according to the choice of your base and/or plate. Always include all required machining services, structural shapes and fasteners in their proper places on the order form.

**How To Order**

Shipping Method:  Ship To: Customer:   
 Ordered By:  Address:   
 City / State:   
 Attention:   
 Tag:

**Complete Address & Shipping Method Required... NO P.O. Box**

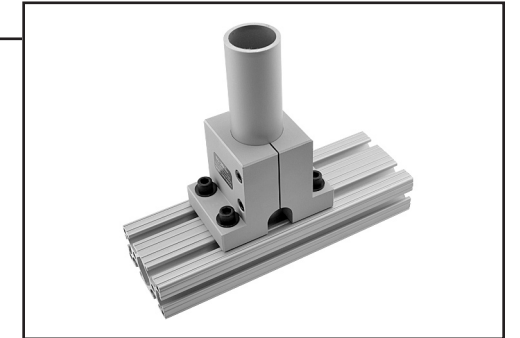
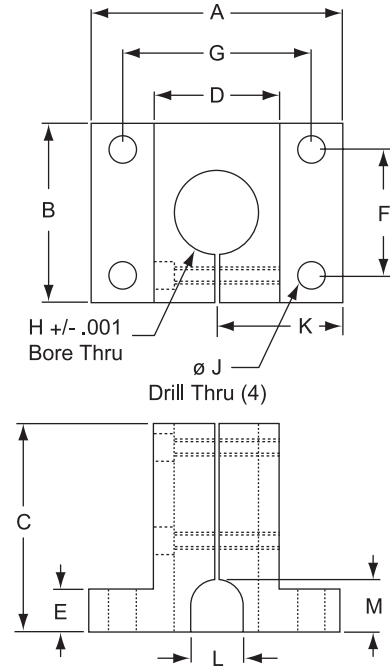
1  
2  
3  
4  
5

Part Number	Quantity	Length	Description / Machining	Price/ UOM	Ext. Price
1010	2	18.50"	7042 in A both ends	\$ .23	\$8.51
1515-Lite-145	5	145.00"	Full length profile	\$65.25	\$326.25
3060	4	40.00"	7029 one end	\$2.95	\$472.00
3030	4	36.00"	7050 style G in W, X both ends	\$1.50	\$216.00
CM01-051006	2		Custom bracket per drawing #1	\$23.00	\$46.00
2611	1	5.25 sf.	1/4" bronze polycarb 1 @ 18" x 40" w/ 7311 per drawing	\$10.40	\$54.60
7150	1		Cut plastic panels all sides < -48"	\$10.50	\$10.50
7042	4		10 Series anchor fastener counterbore	\$2.25	\$9.00
7005	2		Cut-to-length for 1010	\$1.95	\$3.90
7023	4		Cut-to-length for 3060	\$2.90	\$11.60
7030	4		Cut-to-length for 3030	\$2.60	\$10.40
7050	64		15 Series drill access hole	\$1.95	\$124.80
7029	4		5/16-18 tap service for 3060	\$15.20	\$60.80
7311	2		Anchor fastener notch for 10 Series	\$0.53	\$1.06
3380	32		15 Series 5/16-18 black zinc end fastener w/ screw	\$1.60	\$51.20
2114	16		Gray T-Slot covers for 10 Series	\$3.45	\$55.20
2050	8		End caps for 3030	\$1.85	\$14.80
3395	4		10 Series anchor fasteners	\$2.90	\$11.60
3279	5		15 Series 5/16-18 black zinc double economy T-nut	\$0.79	\$3.95
4132	12		2 hole inside corner gusset bracket	\$3.95	\$47.40
3393	24		10 Series 1/4-20 BHSCS & economy T-nut	\$0.40	\$9.60

TOTAL \$1549.17

NOTE: Prices shown for illustration use only. Contact your distributor for a personalized quote.

Special Instructions: **Must be delivered for assembly by Friday!!!**



**Single Shaft Bases**



- 10 and 15 Series compatible
- Stanchion clamp screws included
- Made of 6105-T5 clear anodized aluminum
- Refer to page 209 for stanchion profiles

Part No.	Size	A	B	C	D	E	F	G	H	J	K	L	M	Lbs.
5050	1.000"	3.000	2.125	2.500	1.500	.500	1.000	2.250	1.004	.257	1.500	.620	.620	.714
5100	1.000"	3.000	2.125	2.500	1.500	.500	1.500	2.250	1.004	.328	1.500	.620	.620	.711
5200	1.500"	3.879	2.500	3.000	2.250	.750	1.500	3.000	1.505	.328	1.937	.880	.875	1.383
5300	2.000"	4.750	3.250	3.250	2.750	.750	1.500	3.750	2.005	.328	2.375	1.250	.750	2.271

☒ = 10 Series Compatible Part

Recommended Mounting Hardware (Stanchion to T-Slot):

Stanchion Part No.	Bolt Assembly Part No.	Qty	Bolts Thru	Description
5050 ☒	3471 ☒	4	E	1/4-20 x 7/8" SHCS, Econ T-Nut and Washer
5100	3470	4	E	5/16-18 x 1" SHCS, Econ T-Nut and Washer
5200	3421	4	E	5/16-18 x 1 1/4" SHCS, Econ T-Nut and Washer
5300	3421	4	E	5/16-18 x 1 1/4" SHCS, Econ T-Nut and Washer

10

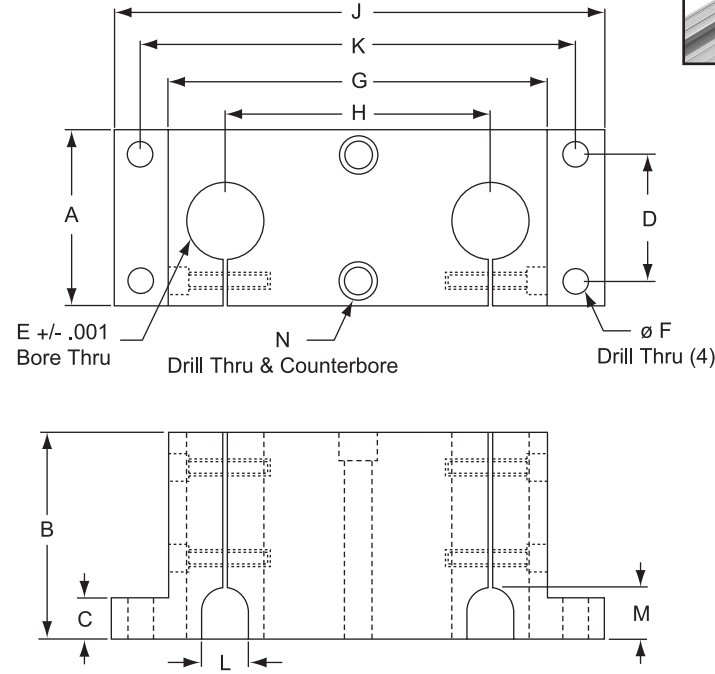
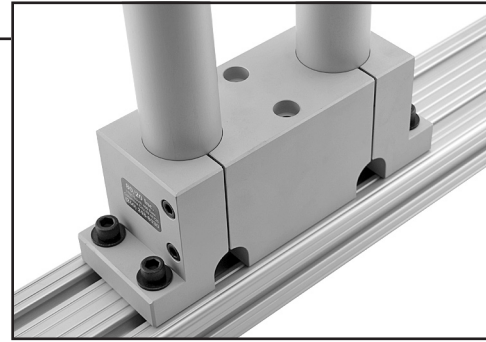
10

1 - Profiles = Pages 147-202 • 2 - Custom Parts = Pages 203-220 • 3 - Panels = Pages 349-432  
 4 - Machining Services = Pages 559-608 • 5 - Accessories & Tools = Pages 433-456 & 549-558



**Double Shaft Bases**

- 10 and 15 Series compatible
- Stanchion clamp screws included
- Made of 6105-T5 clear anodized aluminum
- Refer to page 209 for stanchion profiles



Part No.	Size	A	B	C	D	E	F	G	H	J	K	L	M	N	Lbs.
5125	1.000"	2.125	2.480	.500	1.000	1.004	.257	5.000	3.500	6.500	5.750	.620	.620	.406 x .26 Deep	2.265
5150	1.000"	2.125	2.480	.500	1.500	1.004	.328	5.000	3.500	6.500	5.750	.620	.620	.515 x .32 Deep	2.237
5250	1.500"	2.500	2.980	.750	1.500	1.505	.328	6.125	3.875	7.750	6.875	.880	.820	.515 x .32 Deep	3.590
5350	2.000"	3.250	3.250	.750	1.500	2.005	.328	7.500	4.750	9.500	8.500	1.250	.750	.515 x .32 Deep	6.095

☒ = 10 Series Compatible Part

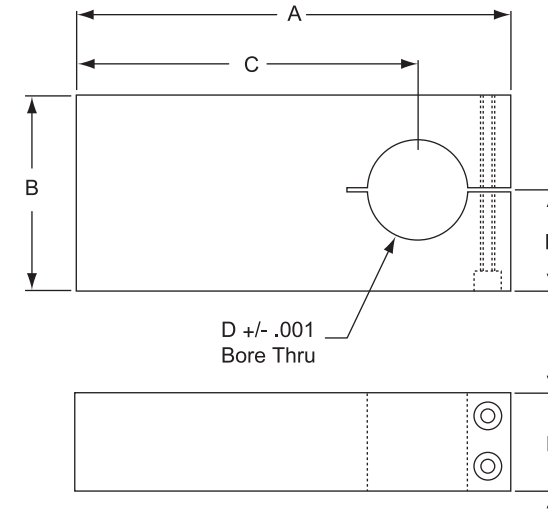
Recommended Mounting Hardware (Stanchion to T-Slot):

Stanchion Part No.	Bolt Assembly Part No.	Qty	Bolts Thru	Description
5125 ☒	3471 ☒	4	C	1/4-20 x 7/8" SHCS, Econ T-Nut and Washer
	3434 ☒	2	B	1/4-20 x 2 1/2" SHCS, Econ T-Nut w/o Washer
5150	3470	4	C	5/16-18 x 1" SHCS, Econ T-Nut and Washer
	3429	2	B	5/16-18 x 2 1/2" SHCS, Econ T-Nut w/o Washer
5250	3421	4	C	5/16-18 x 1 1/4" SHCS, Econ T-Nut and Washer
	3430	2	B	5/16-18 x 3" SHCS, Econ T-Nut w/o Washer
5350	3421	4	C	5/16-18 x 1 1/4" SHCS, Econ T-Nut and Washer
	3431	2	B	5/16-18 x 3 1/4" SHCS, Econ T-Nut w/o Washer



**Single Shaft Blank Mounting Plate**

- 10 and 15 Series compatible
- Stanchion clamp screws included
- Made of 6105-T5 clear anodized aluminum
- A back slot is added to the bore on part 5400 to enhance tightening

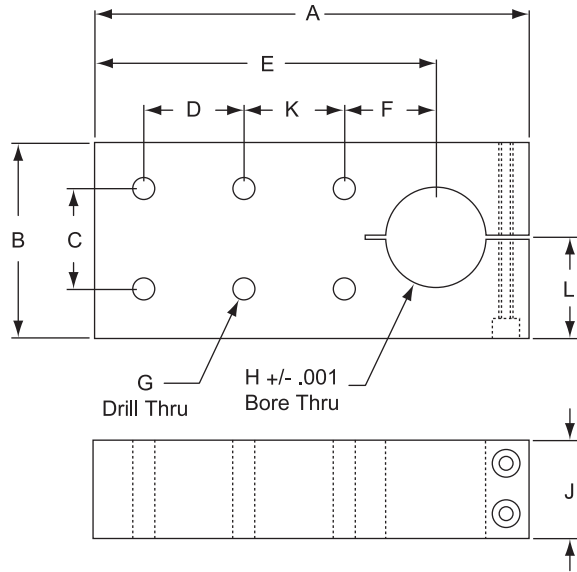
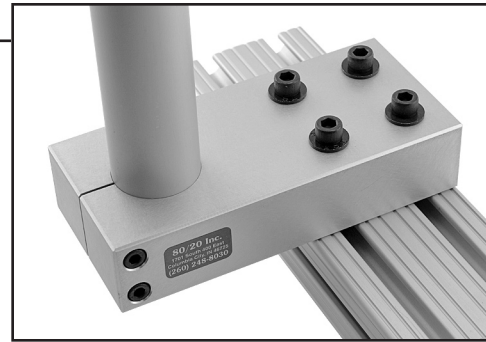


Part No.	Size	A	B	C	D	E	F	Lbs.
5400	1.000"	4.500	2.000	3.560	1.004	1.200	1.000	.965
5450	1.500"	6.500	3.000	5.125	1.505	1.450	1.500	2.515
5500	2.000"	7.750	4.000	6.120	2.005	1.950	2.000	5.328

**Single Shaft Pre-Drilled Mounting Plate**



- 10 and 15 Series compatible
- Stanchion clamp screws included
- Made of 6105-T5 clear anodized aluminum
- A back slot is added to the bore on parts 5415 & 5425 to enhance tightening



Part No.	Size	A	B	C	D	E	F	G	H	J	K	L	Lbs.
5415	1.000"	4.500	2.000	1.000	1.000	3.560	2.060	4 @ .257	1.004	1.200	—	1.000	.940
5425	1.000"	4.500	2.000	1.500	1.500	3.560	1.562	4 @ .328	1.004	1.200	—	1.000	.935
5475	1.500"	6.500	3.000	1.500	1.500	5.125	2.875	4 @ .328	1.505	1.450	—	1.500	2.460
5525	2.000"	7.750	4.000	1.500	1.500	6.120	2.370	6 @ .328	2.005	1.950	1.500	2.000	5.258

☒ = 10 Series Compatible Part

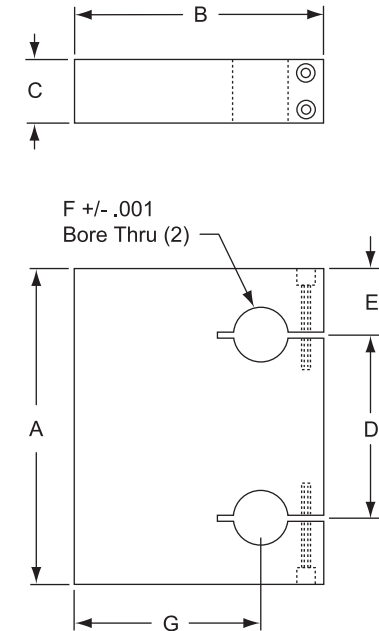
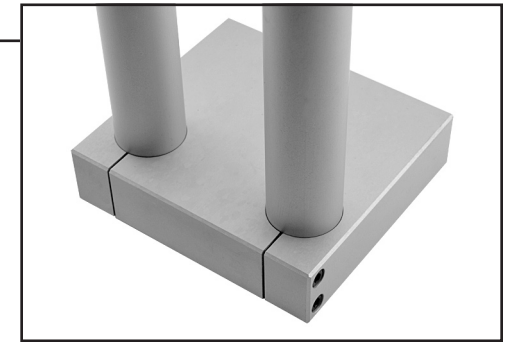
Recommended Mounting Hardware (Stanchion to T-Slot):

Stanchion Part No.	Bolt Assembly Part No.	Qty	Bolts Thru	Description
5415 ☒	3432 ☒	4	J	1/4-20 x 1 1/2" SHCS, Econ T-Nut and Washer
5425	3423	4	J	5/16-18 x 1 3/4" SHCS, Econ T-Nut and Washer
5475	3424	4	J	5/16-18 x 2" SHCS, Econ T-Nut and Washer
5525	3428	6	J	5/16-18 x 2 1/2" SHCS, Econ T-Nut and Washer

**Double Shaft Blank Mounting Plate**



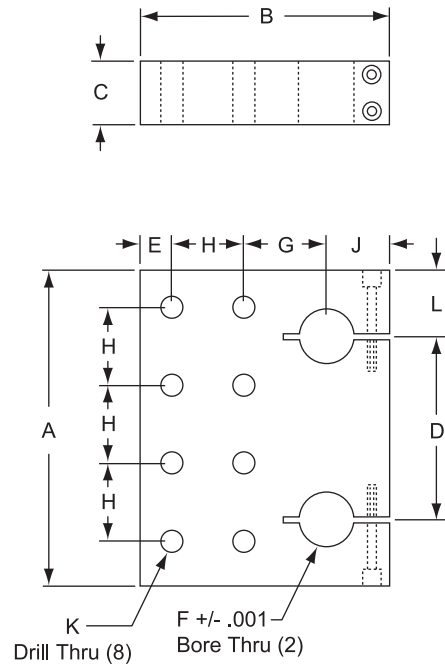
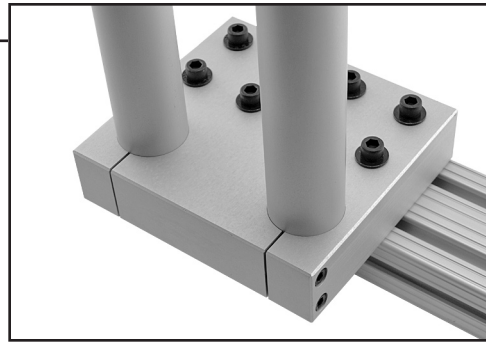
- 10 and 15 Series compatible
- Stanchion clamp screws included
- Made of 6105-T5 clear anodized aluminum
- A back slot is added to the bore on part 5700 to enhance tightening



Part No.	Size	A	B	C	D	E	F	G	Lbs.
5700	1.000"	6.000	4.500	1.200	3.500	1.250	1.004	3.560	3.020
5750	1.500"	6.000	5.500	1.450	3.875	1.062	1.505	4.125	4.165

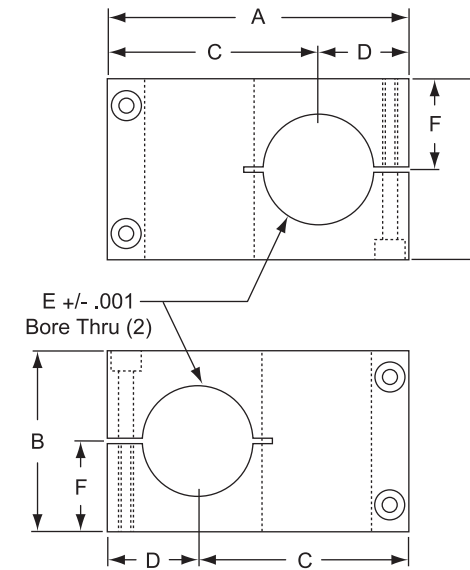
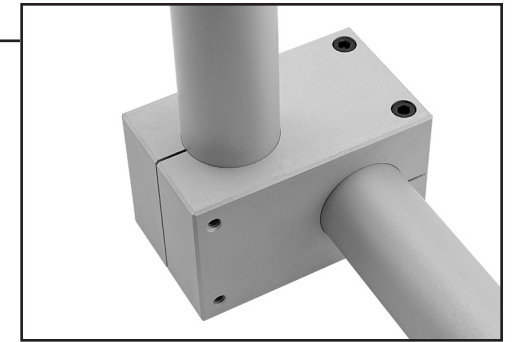
**Double Shaft Pre-Drilled Mounting Plate** 

- 15 Series compatible
- Stanchion clamp screws included
- Made of 6105-T5 clear anodized aluminum
- A back slot is added to the bore on part 5725 to enhance tightening



**Stanchion Cross Clamp** 

- 10 and 15 Series compatible
- Stanchion clamp screws included
- Made of 6105-T5 clear anodized aluminum
- A back slot is added to the bore on part 5575 to enhance tightening



10

Part No.	Size	A	B	C	D	E	F	G	H	J	K	L	Lbs.
5725	1.000"	6.000	4.500	1.200	3.500	.750	1.004	1.310	1.500	.940	.328	1.250	2.910
5775	1.500"	6.000	5.500	1.450	3.875	.750	1.505	1.875	1.500	1.375	.328	1.062	4.080

Recommended Mounting Hardware (Stanchion to T-Slot):

Stanchion Part No.	Bolt Assembly Part No.	Qty	Bolts Thru	Description
5725	3423	8	C	5/16-18 x 1 3/4" SHCS, Econ T-Nut and Washer
5775	3424	8	C	5/16-18 x 2" SHCS, Econ T-Nut and Washer

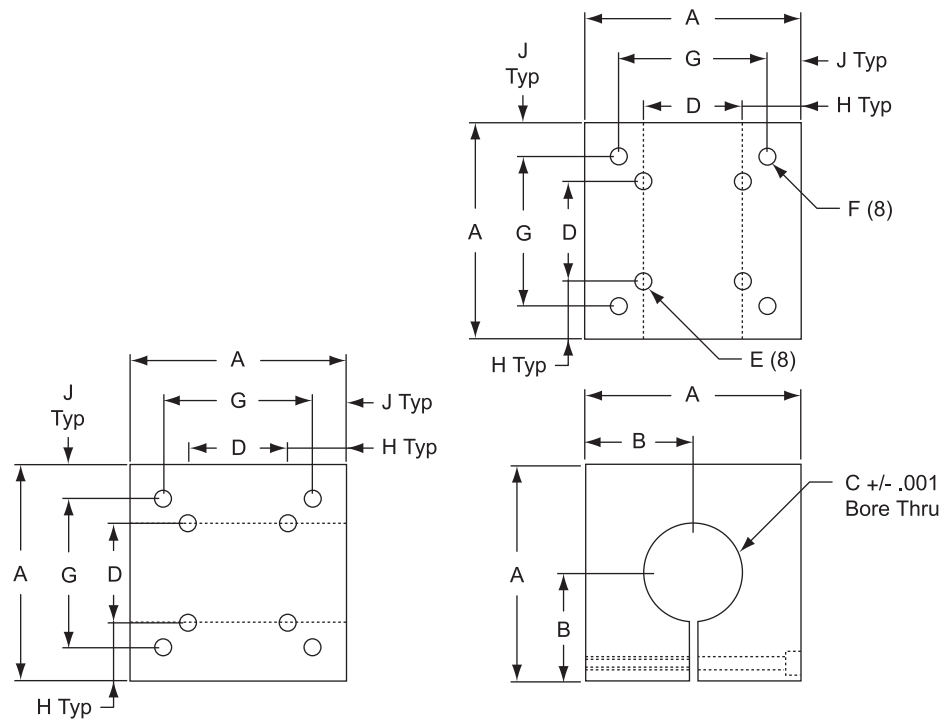
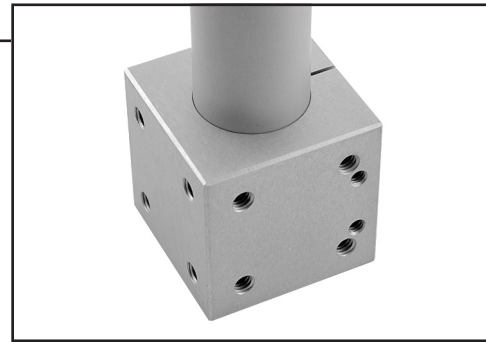
Part No.	Size	A	B	C	D	E	F	Lbs.
5575	1.000"	3.125	2.000	2.125	1.000	1.004	1.000	.925
5625	1.500"	4.125	2.500	2.875	1.250	1.504	1.250	1.665
5675	2.000"	5.500	3.250	3.875	1.625	2.005	1.625	3.620

10

**Single Shaft Mounting Block**



- 10 and 15 Series compatible
- Stanchion clamp screws included
- Made of 6105-T5 clear anodized aluminum

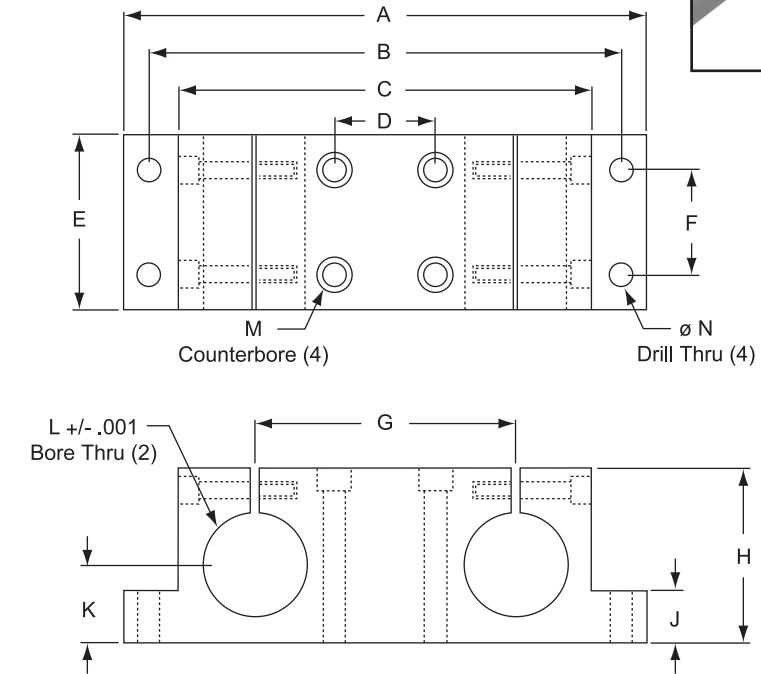
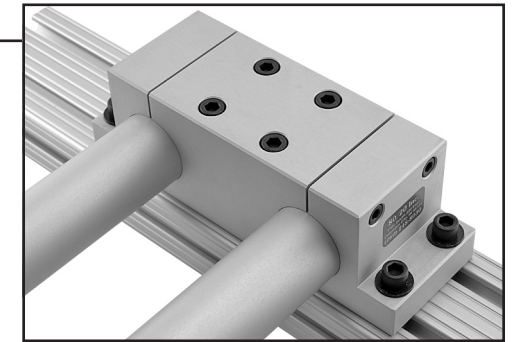


Part No.	Size	A	B	C	D	E	F	G	H	J	Lbs.
5550	1.000"	2.000	1.000	1.004	1.500	5/16-18 x .500	—	—	.250	—	.600
5600	1.500"	2.500	1.250	1.505	1.500	5/16-18 x .500	—	—	.500	—	1.050
5650	2.000"	3.250	1.625	2.005	1.500	5/16-18 x .625	5/16-18 x .750	2.250	.875	.500	2.325

**Double Shaft Mounting Block**



- 10 and 15 Series compatible
- Stanchion clamp screws included
- Made of 6105-T5 clear anodized aluminum



Part No.	Size	A	B	C	D	E	F	G	H	J	K	L	M	N	Lbs.
5845	1.000"	6.500	5.750	5.000	1.000	2.125	1.000	3.500	2.130	.500	1.062	1.004	.406 x .26 Dp	.257	2.000
5850	1.000"	6.500	5.750	5.000	1.500	2.125	1.500	3.500	2.130	.500	1.062	1.004	.515 x .32 Dp	.328	1.990
5900	1.500"	7.750	7.000	6.125	1.500	2.500	1.500	3.875	2.500	.750	1.125	1.505	.515 x .32 Dp	.328	3.005
5950	2.000"	9.500	8.500	7.500	1.500	3.250	1.500	4.750	3.250	1.000	1.625	2.005	.515 x .32 Dp	.328	6.210

☒ = 10 Series Compatible Part

Recommended Mounting Hardware (Stanchion to T-Slot):

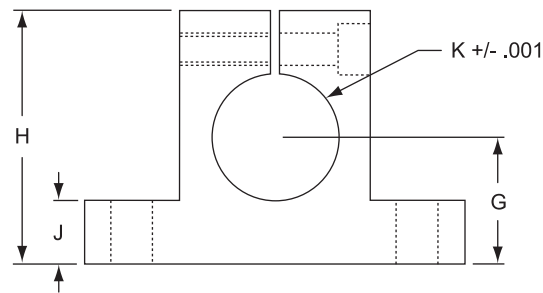
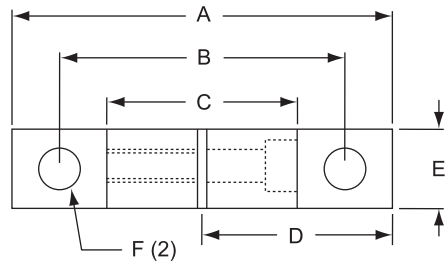
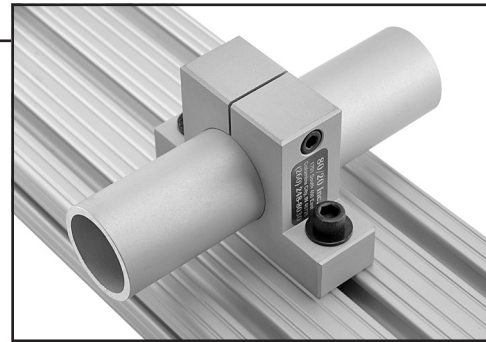
Stanchion Part No.	Bolt Assembly Part No.	Qty	Bolts Thru	Description
5845	3471	4	J	1/4-20 x 7/8" SHCS, Econ T-Nut and Washer
	3433	4	H	1/4-20 x 2 1/8" SHCS, Econ T-Nut w/o Washer
5850	3470	4	J	5/16-18 x 1" SHCS, Econ T-Nut and Washer
	3427	4	H	5/16-18 x 2 1/4" SHCS, Econ T-Nut w/o Washer
5900	3421	4	J	5/16-18 x 1 1/4" SHCS, Econ T-Nut and Washer
	3429	4	H	5/16-18 x 2 1/2" SHCS, Econ T-Nut w/o Washer
5950	3422	4	J	5/16-18 x 1 1/2" SHCS, Econ T-Nut and Washer
	3431	4	H	5/16-18 x 3 1/4" SHCS, Econ T-Nut w/o Washer





**Single Horizontal Base**

- 10 and 15 Series compatible
- Stanchion clamp screws included
- Made of 6105-T5 clear anodized aluminum
- Refer to page 209 for stanchion profiles



Part No.	Size	A	B	C	D	E	F	G	H	J	K	Lbs.
5860 ☒	1.000"	3.000	2.250	1.500	1.500	.875	.257 thru	1.062	2.128	.500	1.004	.268
5870	1.000"	3.000	2.250	1.500	1.500	.875	.328 thru	1.062	2.125	.500	1.004	.259
5880	1.500"	3.875	3.000	2.253	1.937	1.125	.328 thru	1.125	2.500	.750	1.505	1.253
5890	2.000"	4.750	3.750	2.750	2.375	1.437	.328 thru	1.625	3.250	1.000	2.005	1.074

☒ = 10 Series Compatible Part

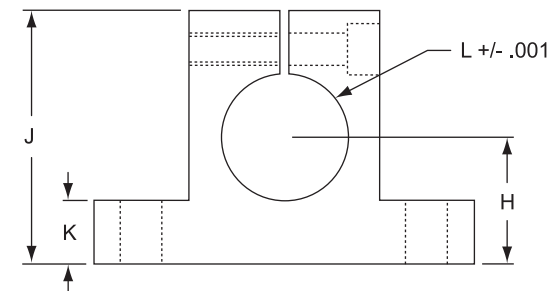
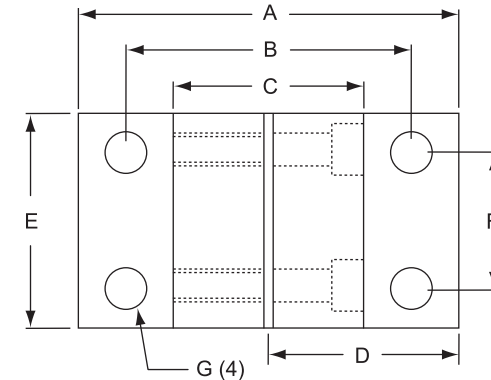
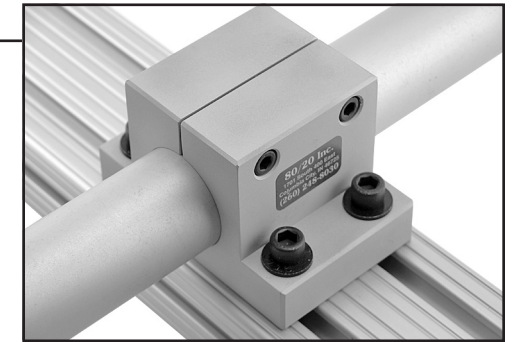
Recommended Mounting Hardware (Stanchion to T-Slot):

Stanchion Part No.	Bolt Assembly Part No.	Qty	Bolts Thru	Description
5860 ☒	3471 ☒	2	J	1/4-20 x 7/8" SHCS, Econ T-Nut and Washer
5870	3470	2	J	5/16-18 x 1" SHCS, Econ T-Nut and Washer
5880	3421	2	J	5/16-18 x 1 1/4" SHCS, Econ T-Nut and Washer
5890	3422	2	J	5/16-18 x 1 1/2" SHCS, Econ T-Nut and Washer



**Double Horizontal Base**

- 10 and 15 Series compatible
- Stanchion clamp screws included
- Made of 6105-T5 clear anodized aluminum
- Refer to page 209 for stanchion profiles



Part No.	Size	A	B	C	D	E	F	G	H	J	K	L	Lbs.
5910 ☒	1.000"	3.000	2.250	1.500	1.500	2.000	1.000	.257 Thru	1.062	2.125	.500	1.004	.575
5920	1.000"	3.000	2.250	1.500	1.500	2.000	1.500	.328 Thru	1.062	2.125	.500	1.004	.568
5930	1.500"	3.875	3.000	2.255	1.937	2.500	1.500	.328 Thru	1.125	2.500	.750	1.505	1.210
5940	2.000"	4.750	3.750	2.750	2.375	3.250	1.500	.328 Thru	1.625	3.250	1.000	2.005	1.906

☒ = 10 Series Compatible Part

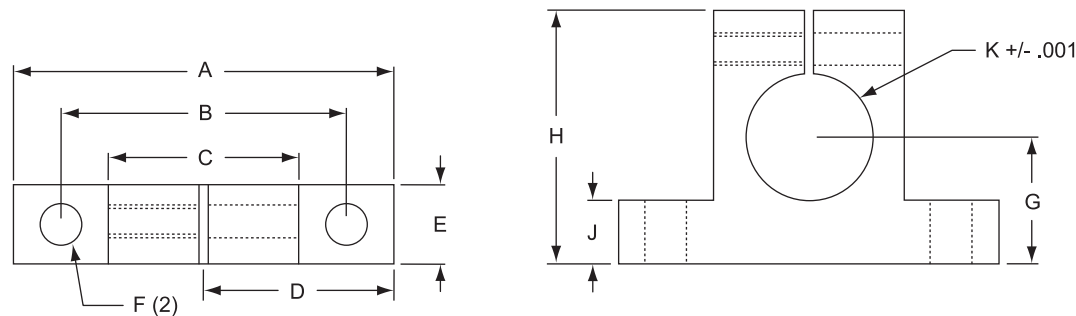
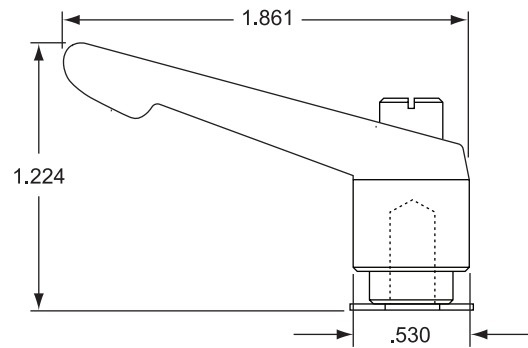
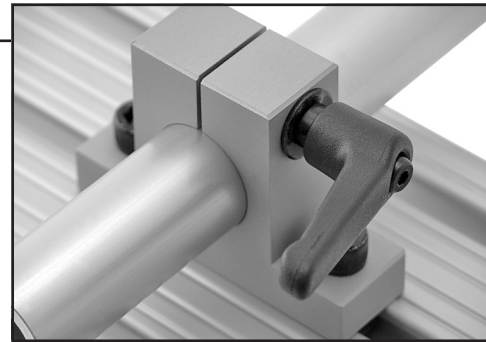
Recommended Mounting Hardware (Stanchion to Slot):

Stanchion Part No.	Bolt Assembly Part No.	Qty	Bolts Thru	Description
5910 ☒	3471 ☒	4	K	1/4-20 x 7/8" SHCS, Econ T-Nut and Washer
5920	3470	4	K	5/16-18 x 1" SHCS, Econ T-Nut and Washer
5930	3421	4	K	5/16-18 x 1 1/4" SHCS, Econ T-Nut and Washer
5940	3422	4	K	5/16-18 x 1 1/2" SHCS, Econ T-Nut and Washer

**Horizontal Quick Clamp**



- 10 and 15 Series compatible
- Adjustable clamping L-handles (included) are black nylon
- Stanchion block is 6105-T5 clear anodized aluminum
- See page 209 for stanchion profiles
- See page 210 for stanchion tube



Part No.	Size	A	B	C	D	E	F	G	H	J	K	Lbs.
5360 ☒	1.000"	3.000	2.250	1.500	1.500	.875	.257 Thru	1.062	2.125	.500	1.004	.294
5370	1.000"	3.000	2.250	1.500	1.500	.875	.328 Thru	1.062	2.125	.500	1.004	.294

☒ = 10 Series Compatible Part

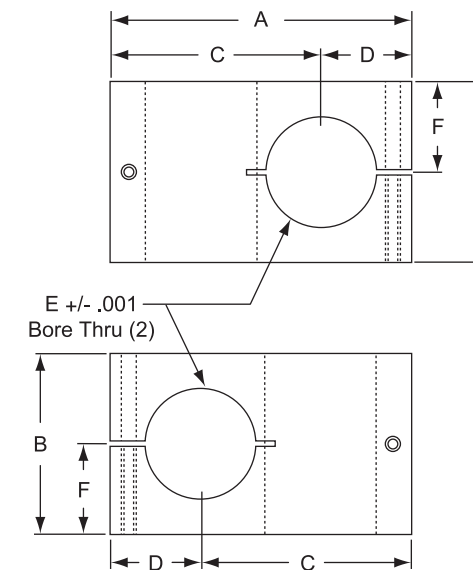
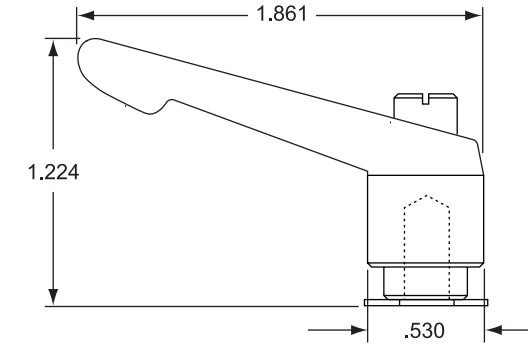
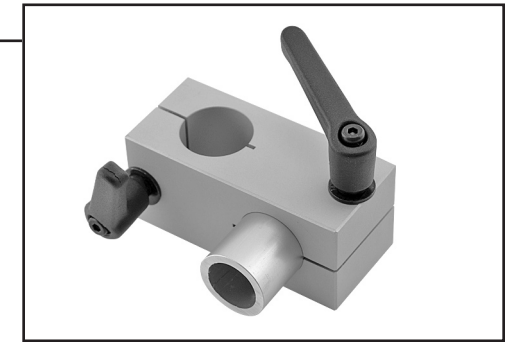
Recommended Mounting Hardware (Stanchion to T-Slot):

Stanchion Part No.	Bolt Assembly Part No.	Qty	Bolts Thru	Description
5360 ☒	3471 ☒	2	J	1/4-20 x 7/8" SHCS, Econ T-Nut and Washer
5370	3470	2	J	5/16-18 x 1" SHCS, Econ T-Nut and Washer

**Quick Cross Clamp**



- 10 and 15 Series compatible
- Adjustable clamping L-handles (included) are black nylon
- Made of 6105-T5 clear anodized aluminum
- See page 209 for stanchion profile
- See page 210 for stanchion tube



Part No.	Size	A	B	C	D	E	F	Lbs
5340 ☒	1.000"	3.375	1.500	2.375	1.000	1.004	.750	.825

☒ = 10 Series Compatible Part



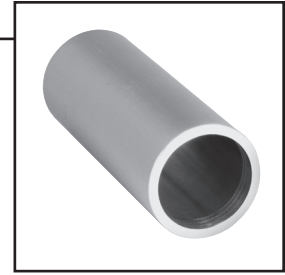
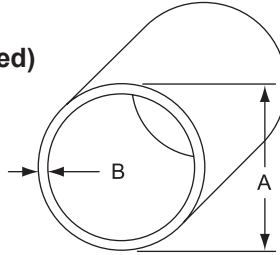
# 80/20<sup>®</sup> Inc.

The Industrial Erector Set<sup>®</sup>

**THE STANDARD**

## Aluminum Tube

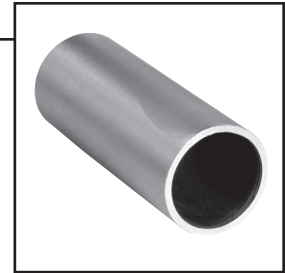
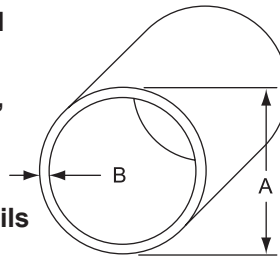
- Drawn precision tube
- Stock length: 144" mill-finish (unanodized) and clear anodized finish
- See page 563 for cut-to-length services
- Tolerance:  $+.003''$  /  $-.002''$



Part No.		A	B	Alloy	Cut-To-Length	
Clear Anodized	Mill-Finish				Part No.	Lbs. / Ft.
5035	5036	1.000	.125	6061-T6	7205	.405
5040	5041	1.500	.125	6061-T6	7210	.630
5045	5046	2.000	.125	6061-T6	7213	.930

## Ground & Polished Steel Tube

- Ground and polished, drawn over mandrel (DOM) carbon steel
- Stock length: 145" unfinished (non-plated, non-oxidized)
- See page 563 for cut-to-length services
- Black oxide service available, call for details
- Tolerance:  $+.003''$  /  $-.002''$

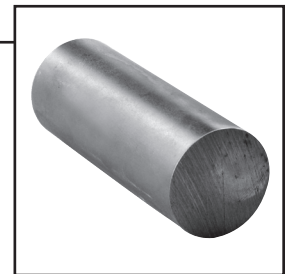
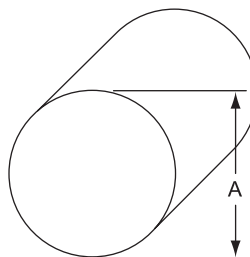


Part No.	A	B	Alloy	Cut-To-Length	
				Part No.	Lbs. / Ft.
5005	1.000	.125	1020	7205	1.168
5015	1.500	.125	1020	7210	1.836
5025	2.000	.125	1020	7213	2.503

## Turned, Ground and Polished Solid Carbon Steel



- Stock length: 145" unfinished (non-plated, non-oxidized)
- See page 563 for cut-to-length services
- Black oxide service available, call for details
- Tolerance:  $+.003''$  /  $-.002''$



Part No.	A	Alloy	Cut-To-Length	
			Part No.	Lbs. / Ft.
5010	1.000	1045	7205	2.670
5020	1.500	1045	7210	6.010
5030	2.000	1045	7213	10.680